

The Multi-Port Virtual Com Port Driver



Download and Install

The multi-port Etherstuff VCP driver, is compatible with Win2k, and XP; it is installed by downloading the EtherStuffVCP_2_0_beta-Setup.exe file from www.etherstuff.com/support.html.

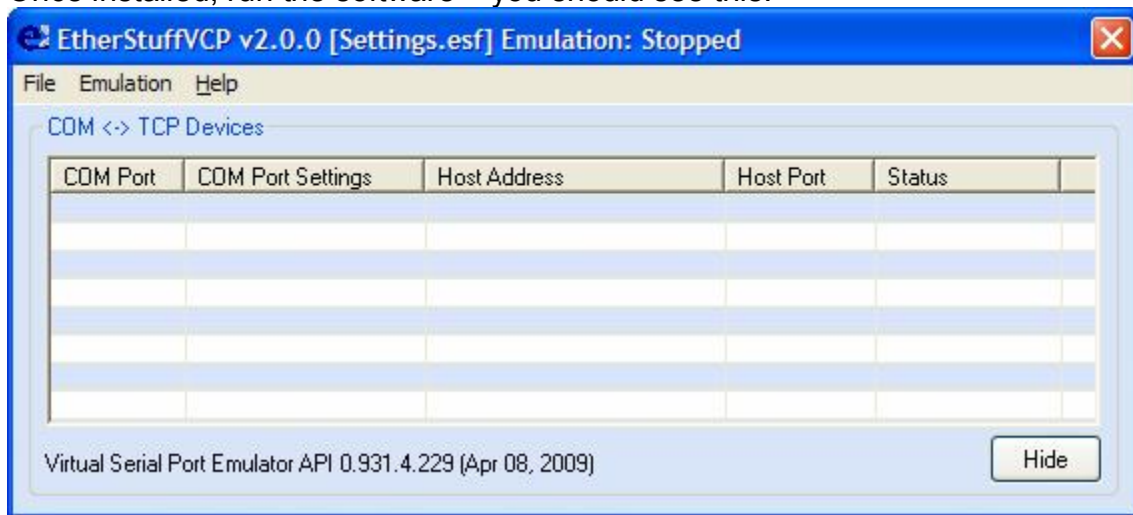
NOTE: This is beta software... we believe it is fully functional and not likely to cause problems in win2k or winXP systems, but you must use at your own risk.

LICENSE

Purchase of an ET-1 (etherterminal) network terminal adaptor and use of this utility solely with etherstuff products is the only way to have license to use this driver. Any other use or distribution of this software in any form is a violation of Federal Copyright Law.

To set up the virtual com port driver, you will need to know your ET-1's IP address and be able to access it, through your LAN/WAN, from the computer you are installing the driver on. Execute the file and install the Etherstuff VCP driver by following the prompts. We suggest using the default folders.

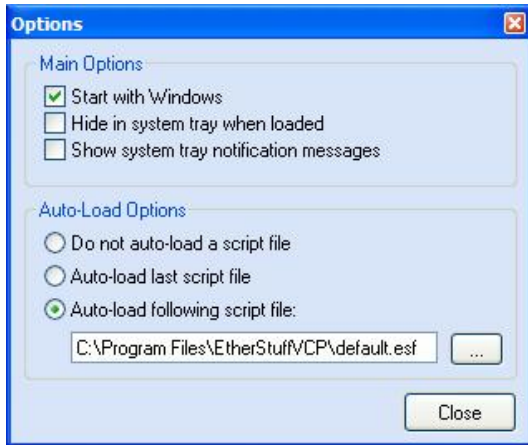
Once installed, run the software – you should see this:



OPTIONS

Before setting up the ET-1 virtual com port(s), it's a good idea to set up the program options.

The Main Options are pretty self-explanatory, and allow you to control whether the com driver restarts when windows is (re)started, whether an icon shows up in the system tray indicating the program's operation, and whether system tray messages indicating program status are enabled.

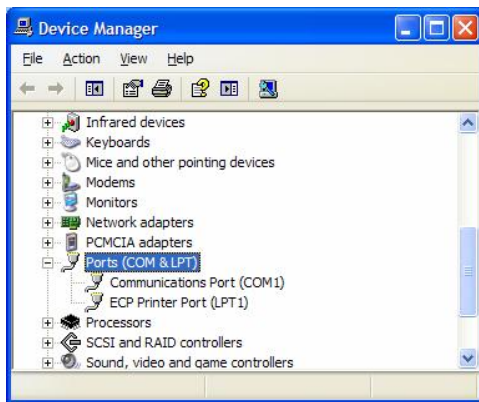


Auto-Load Options are for what saved configuration (com port settings) file gets loaded at startup. If a startup script file is not loaded at startup, you'll need to re-define your ET-1 com ports each time you run the software. We recommend using

the last option (as checked above) so the driver will always autoload the default configuration (which we'll define shortly) at startup. Once you've selected the program options, click close.

Setting the com port configuration

Before starting this process you need to know what com ports are already defined in your system. You can typically find this in Device Manager under control Panel / System / Hardware.

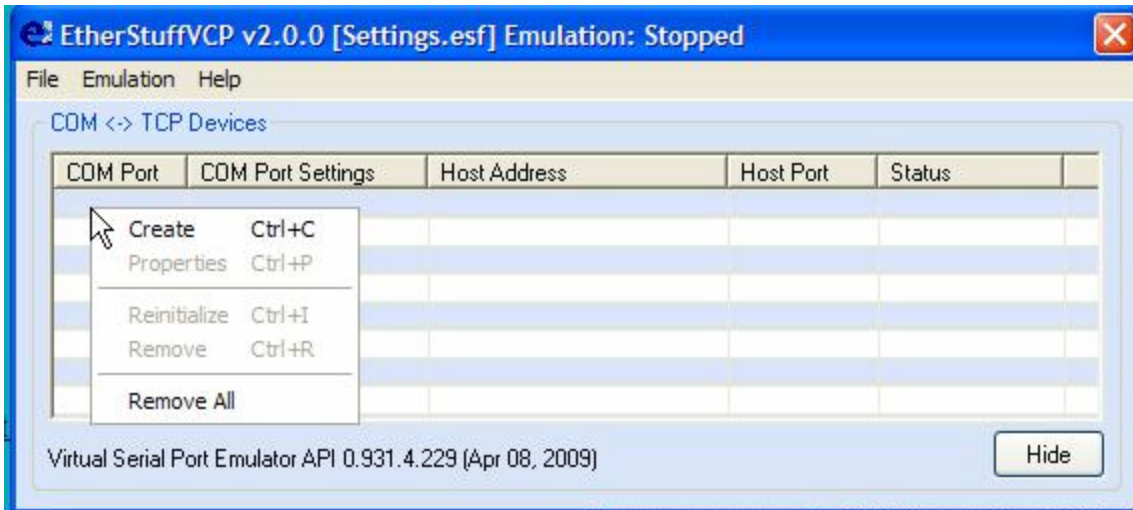


On a typical laptop with one hardware serial port, your list might look like this:

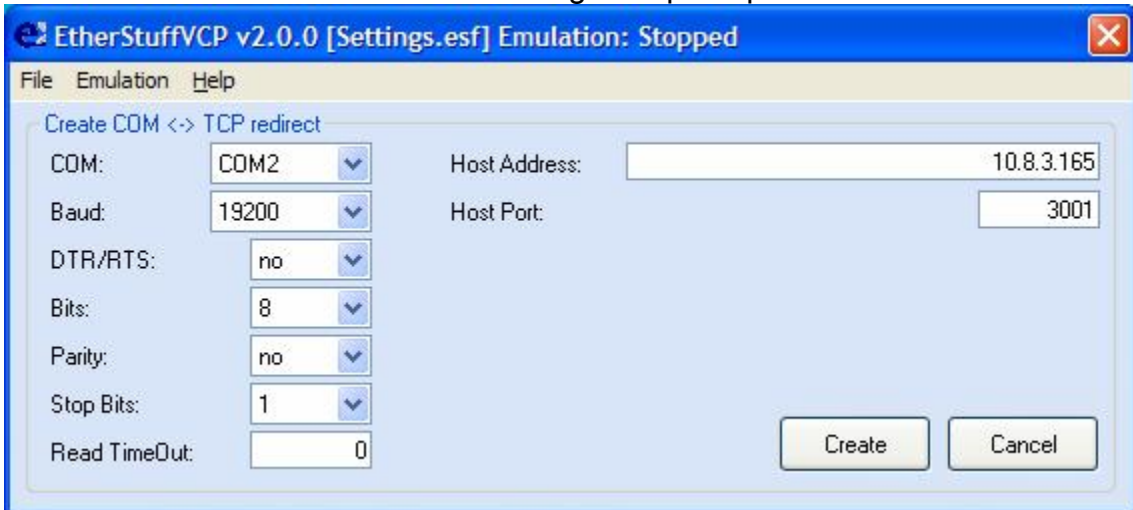
Once you've determined how many com ports are already in your system, you can close out of device manager and the control panel windows.

Create a virtual com port by right clicking in the blank Com Port definition area of the program window, and select Create (or use Ctrl-C).

The Multi-Port Virtual Com Port Driver



The Create COM <-> TCP redirect dialog will open up.



Here you define the settings for the hardware serial port on the ET-1 at the IP address and host port you specify.

Setting up one or many ET-1 devices, directly accessible on different IP addresses.

If you are going directly to an ET-1 on your LAN, or on a LAN/WAN segment directly (no NAT required) accessible to you, the Host Port number should be left at 3001 and each ET-1 should get a distinct Host (IP) address.

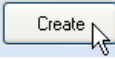
Behind NAT router/firewall via public internet or WAN.

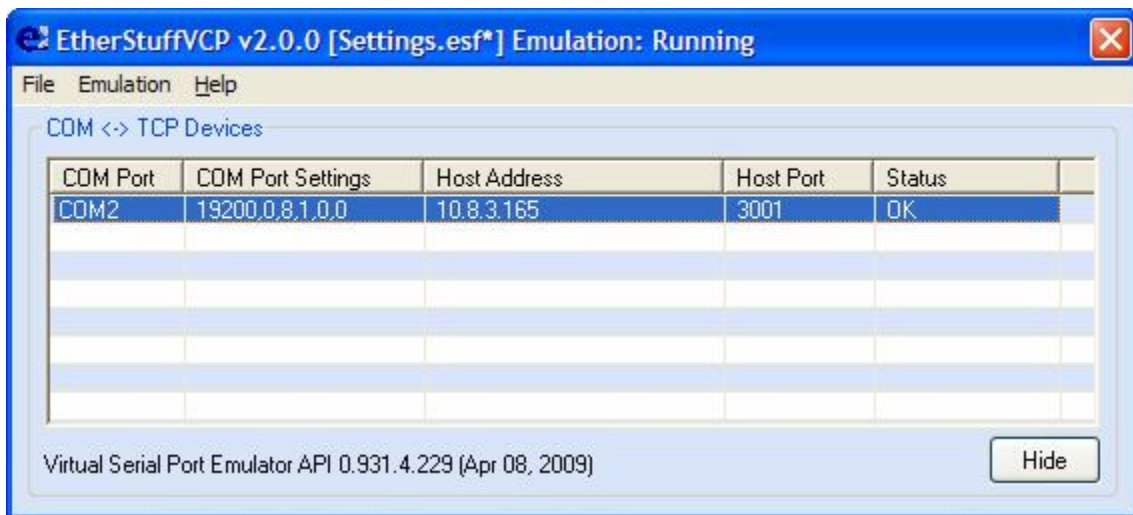
If you must go through NAT on a remote DSL router or Cable modem router to get to your ET-1(s), and you have more than one ET-1 sharing the same public/WAN IP address on the router, the driver can communicate with all of

The Multi-Port Virtual Com Port Driver



them on the same “public” IP address (Host Address) if you set different Host Port numbers for each (we suggest starting at 3001 or 3002 and incrementing the port number by one for each additional com port defined) different ET-1 behind the router. The other requirement for making this architecture work is programming the NAT parameters into your router. This requires admin privileges on your remote router and is too brand specific for us to spell out here. See your router’s configuration instructions.

Once you’ve set the Host Address, Host Port, and com port specs click the  button. If the driver can “see” the ET-1 you’ll get this:



Additional ET-1 virtual com ports are added by right-clicking again in a blank area of the Com Port definition window and selecting “Create” again.

When you’ve created your fill of virtual com ports, save the configuration file by clicking File then Save. Alternate configurations can be set up by using Save-As and specifying a new config file name – just make sure you use the esf extension, and make sure your Auto-Load Options specify the configuration file you want to open (if any) at startup.

Your LAN connected ET-1 terminal adaptors now appear to be normal com ports on your computer.

Com Port emulation can be toggled on and off using CTRL-E or by clicking on the Emulation menu and selecting Start or Stop Emulation.

If you have questions about this utility, bug reports, suggestions for improvement, or need help, please contact mhagans@etherstuff.com by email.