



# EtherTerminal

## Model ET-1

Ethernet to Serial Converter  
Single Port Terminal Server

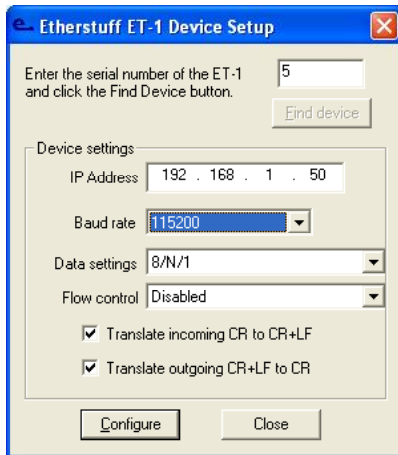
**The Etherstuff ET-1 bridges the gap between your office LAN, WAN, or even public internet network, and the serial devices you need to access.**

Problem: Serial port controlled devices require PC hardware nearby. A single PC can support only a limited number of devices.

SOLUTION: EtherStuff ET-1 single port terminal server.

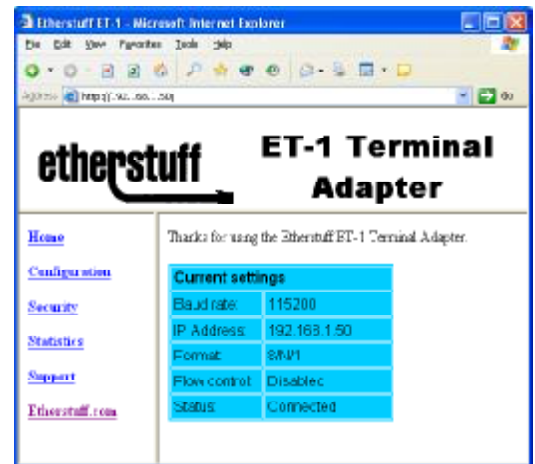
**List Price only \$129  
Order Today !**

- LAN enables “serial-only” devices for connecting to your Network.
  - M&C or CONSOLE connections to routers.
  - Thermostats
  - Modems
  - Industrial equipment
  - Satellite Receivers & Uplinks
- Access unlimited numbers of serial-only devices from any computer on your network.



Setting up the ET-1 is simple and quick. Plug in power, LAN connection, and serial port then configure the ET-1 IP address with the Etherset utility.

The ET-1's built-in Web Server allows you to configure the serial communications port and monitor its status.



ET-1 Webserver

### Using the ET-1 Ethernet to Serial Converter.

Devices you access using a generic terminal program can now be accessed by opening a Telnet session to the ET-1 from anywhere on your network. For ease of access, create desktop shortcut icons to your ET-1 connected devices.

Devices with specialized software that must communicate through a computer's serial port can also be used by installing our free Virtual Com Port driver. (see the support section of our website.

The Etherstuff ET-1 is FCC part 15 verified as a Class A device and is intended for industrial and commercial (not residential) applications.

Etherstuff - 208 West Mimosa Circle - San Marcos, Texas 78666

[www.etherstuff.com](http://www.etherstuff.com)