

Etherstuff PF-1 Power Failure Sensor

CONNECTIONS

TOOLS REQUIRED: small, flat-blade screwdriver like an Xcelite “Greenie” or other “Jeweler’s” screwdriver. (max. 0.1” wide blade)

Using the Power Failure sensor.

1) Connect your Ethermometer’s power adaptor to your UPS protected power.

2) Connect the PF-1 power adaptor into a non-UPS-protected power outlet.

3) Attach the bare wire ends from the PF-1 to one of the two Closure Alarm inputs on the Ethermometer’s sensor board as shown in Photo 1 below. The PF-1 wires are not polarity sensitive, just make sure you get one wire in each hole and tighten the screws down snugly.

Closure2
screw terminals

Closure1
screw terminals

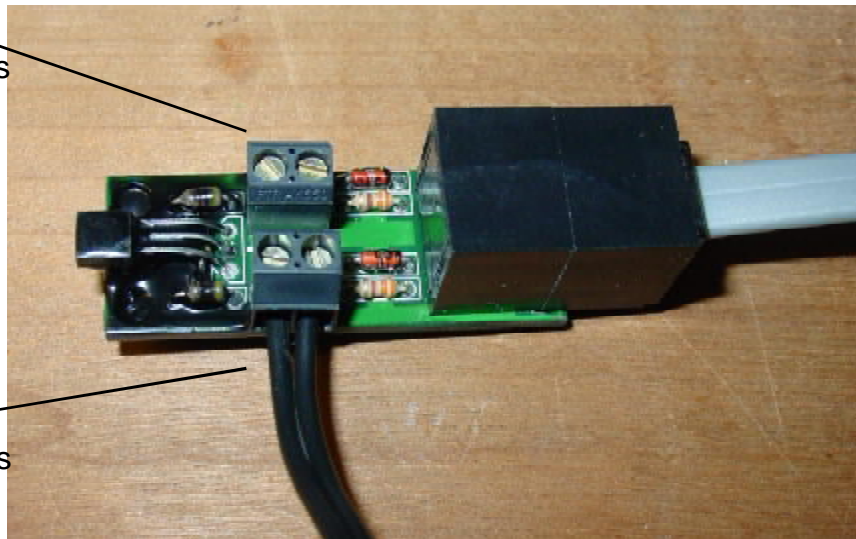
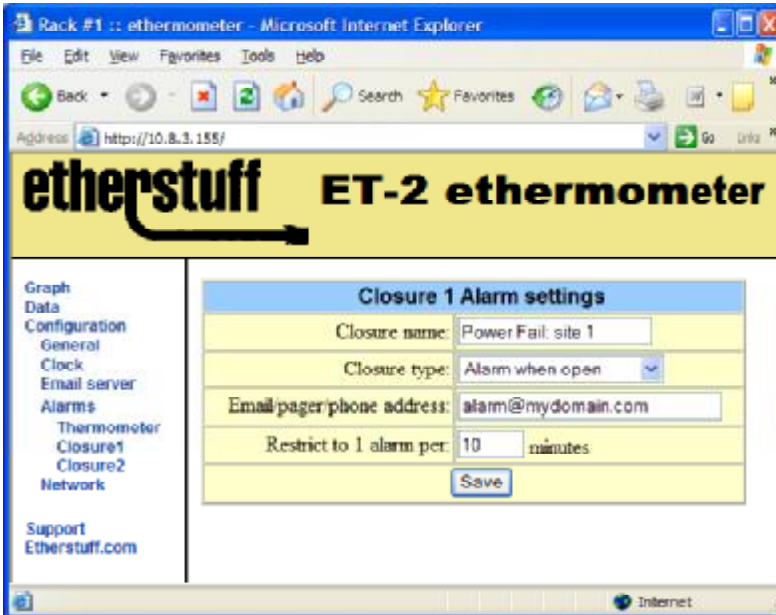


Photo 1. Ethermometer Sensor board shown with PF-1 connection to closure alarm 1 screw terminals.

Software Configuration

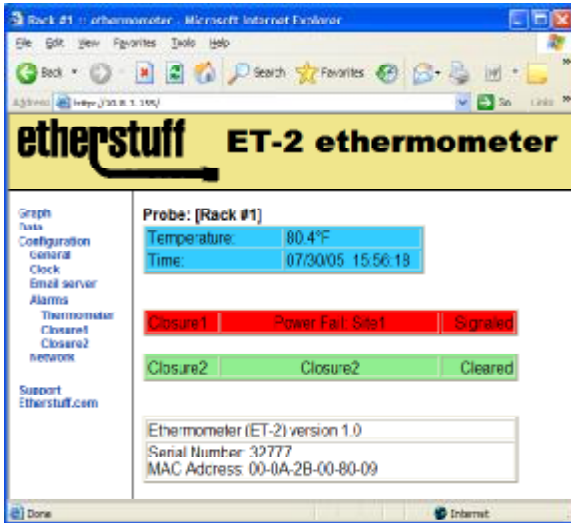
Browse to the Configuration / Closure1 (or Closure2 if you wired the PF-1 to the closure alarm2 input).



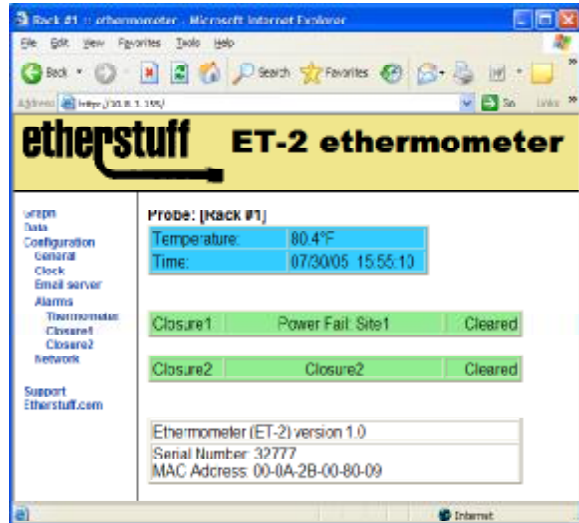
- 1) Assign a meaningful name to your closure alarm.
- 2) Use the dropdown and set Closure type to “Alarm when Open.”
- 3) Enter the email address you want closure1 alarms to be transmitted to. This can be the same as your temperature alert email address if you’d like, or it can be different. It must, however be accessed through the same SMTP server (set up under Configuration / Email server)
- 4) You can restrict the number of closure1 email alarms generated by the Ethermometer so that rapidly recurring alarms do not overload you with emails. The setting supports limiting alarms to one alarm per one to 255 minutes.
- 5) SAVE your settings by clicking the Save button.

Testing the PF-1

You can test operation by unplugging the PF-1 power adaptor and clicking on the DATA tab on the Ethermometer's webpage. You should see a red alarm flag for Closure1 (below). The DATA display does not update in realtime, so you will have to click DATA each time you want to see current status of closures and temperature.



Closure1 showing signaled / alarm status.



Closure1 showing cleared status.

Troubleshooting

Symptom:

What to check:

False Alarm Condition on DATA page

PF-1 wiring connected to the wrong screw terminals, or not making good connection on the Ethermometer sensor module?

PF-1 not getting power from NON-UPS outlet?

Closure type (Configuration / Closure1) set to "Alarm when closed," instead of "Alarm when open?"

Failed PF-1.

Email alarms not working

Test the email address you used in closure1 settings with your normal email client to see if the address works.

The TOTAL length of the email address can be no longer than thirty characters. If the address is over thirty characters, only the first thirty will be saved by the Ethermometer.

SMTP server for closure alarms emails must be the same server set up under Configuration / Email server.

Warranty and Disclaimers

The Etherstuff PF-1 is warranted against defects in materials and workmanship for 1 year from date of purchase. We will repair or replace your PF-1 at no cost should it fail within this warranty period. Proof of purchase date is required. Shipping the defective unit in for repair/replacement is at your expense. Etherstuff will pay for least-cost shipping of the repaired or replaced product, back to the customer, within the Continental US.

Disclaimer (IMPORTANT)

The manufacturer makes NO warranties or representations about fitness for a particular purpose of this product. The manufacturer shall not be liable for editorial or technical errors made herein. The manufacturer shall not be liable for any incidental or consequential damages resulting from the furnishing, performance, or use of the product or this document.

support@etherstuff.com

Etherstuff, 208 W Mimosa Circle - San Marcos, TX 78666 www.etherstuff.com